



Cumberland Lodge

# Specifications & Layouts



+44 (0)1784 432316  
enquiries@cumberlandlodge.ac.uk  
cumberlandlodge.ac.uk





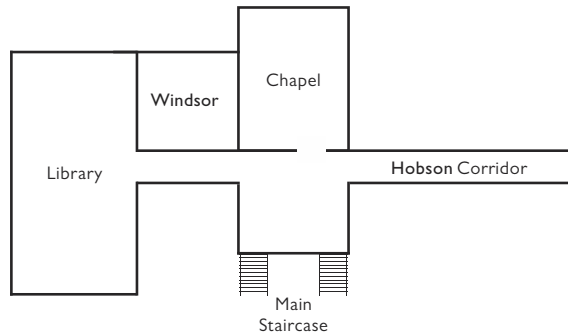
**Cumberland Lodge is a truly distinctive venue in the heart of Windsor Great Park, noted for its historic reception rooms, modern conferencing facilities, excellent food, and exceptional quality of service.**

Our stunning facilities are available to hire throughout the year, for a wide range of residential and non-residential events.

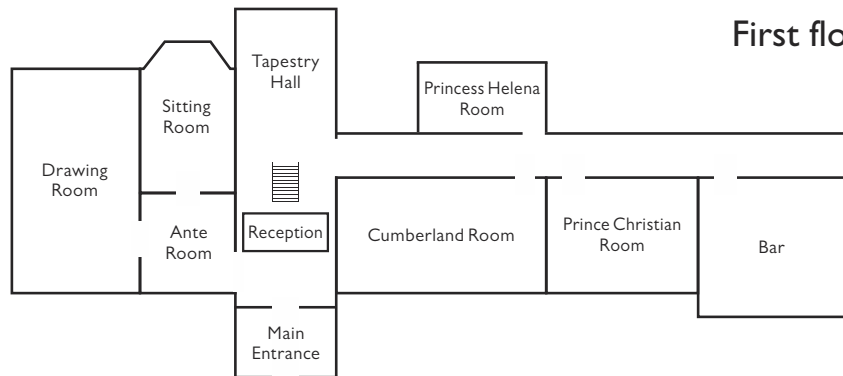
We offer a stimulating and reflective setting for conferences, meetings, retreats, away-days and professional development courses, away from the hustle and bustle. We also host all kinds of special events, including weddings and receptions. Take a 3D virtual tour at [cumberlandlodge.ac.uk/virtual-tour](http://cumberlandlodge.ac.uk/virtual-tour)

By hiring our rooms and facilities you will be actively supporting our work as a charity that empowers people, through dialogue and debate, to tackle the causes and effects of social division.

## Main Lodge Ground floor

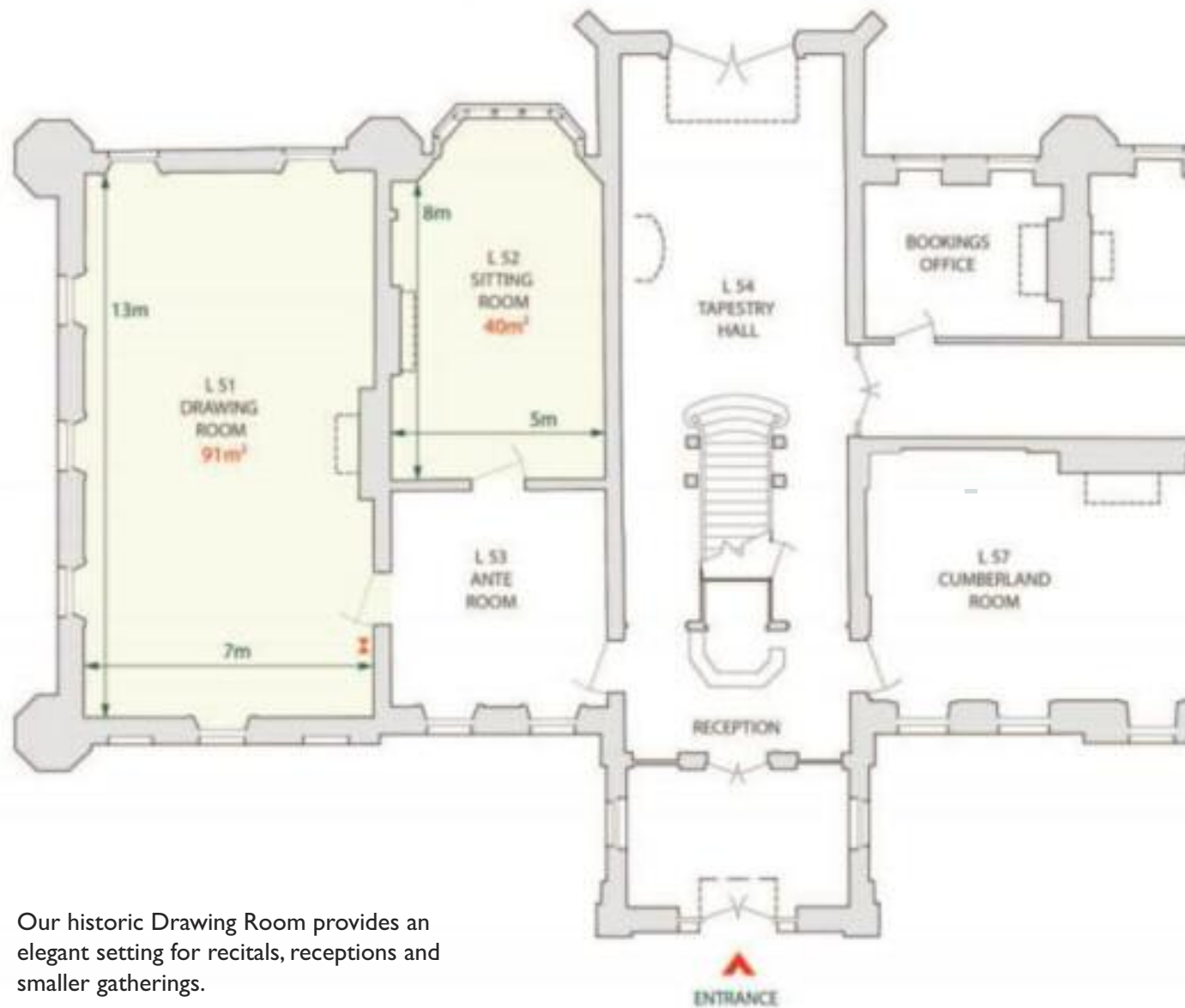


## First floor



# Main Lodge

## Room specifications



### KEY PLAN



ROOM OPTIONS	Drawing Room	Sitting Room
Theatre	-	-
Cabaret	-	-
Boardroom	-	-
Classroom	-	-
U-Shape	-	-
Circle	-	10
Semi Circle	-	6

### HIGHLIGHT FEATURES

Wifi Access	✓	✓
Disabled Access	✓	✓

### KEY

- Floor Socket
- Projector
- Data Point

Our historic Drawing Room provides an elegant setting for recitals, receptions and smaller gatherings.

# Cumberland Lodge (main building)

## Room specifications



### KEY PLAN



ROOM OPTIONS	The Amy Buller Library	Windsor Room	The Chapel
Theatre	50	10	30
Cabaret	30	–	–
Boardroom	25	10	12
Classroom	18	–	–
U-Shape	18	8	9
Circle	30	10	18
Semi Circle	15	8	14

### HIGHLIGHT FEATURES

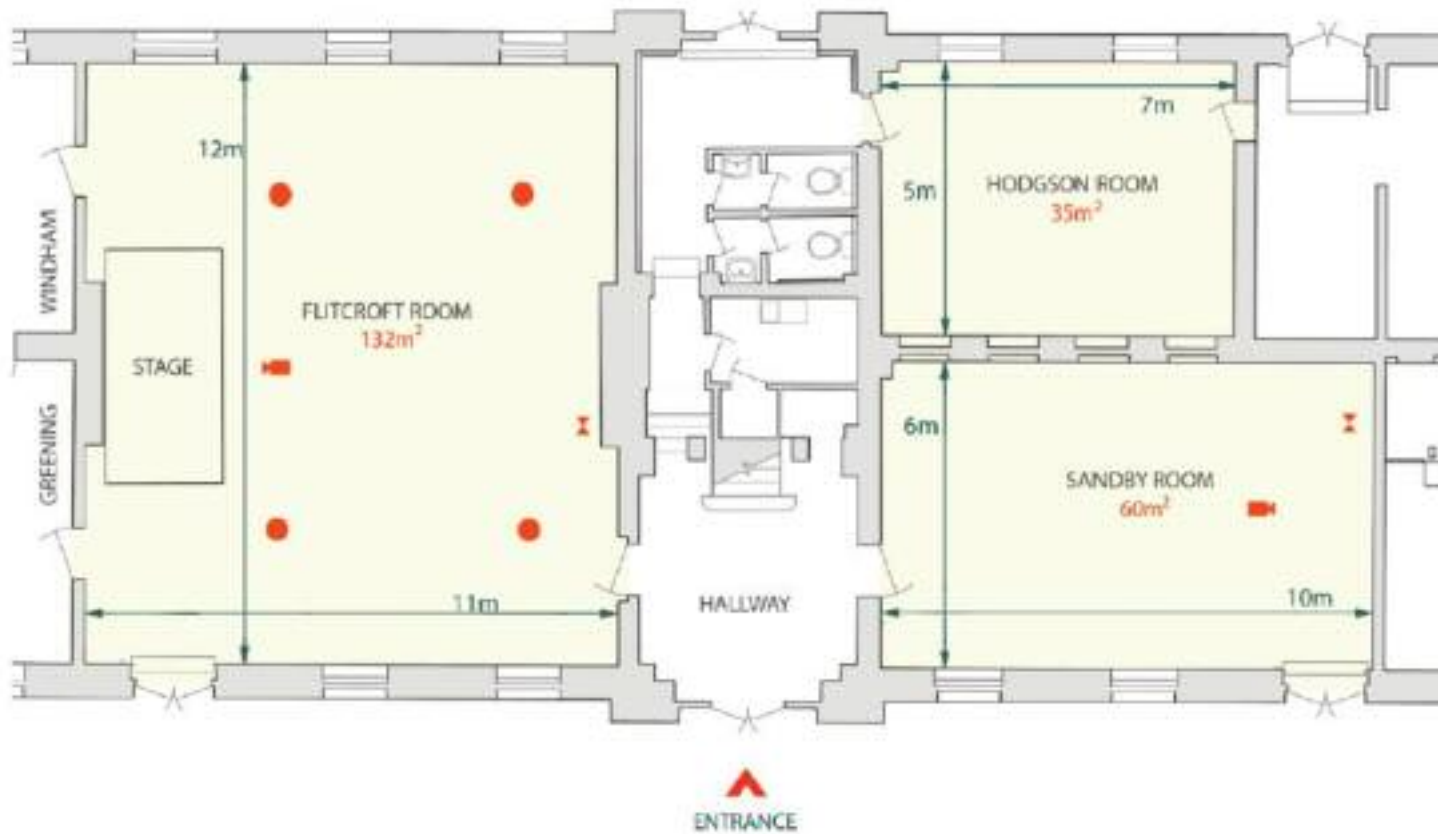
WiFi Access	✓	✓	✓
Disabled Access	✓	✓	✓

### KEY

- Floor Socket
- Projector
- Data Point

# The Mews Conference Centre

## Ground floor - Central room specifications



### KEY PLAN



ROOM OPTIONS	Flitcroft Room	Sandby Room	Hodgson Room
Theatre	120	50	30
Cabaret	66	30	20
Boardroom	48	30	22
Classroom	60	24	18
U-Shape	36	24	16
Circle	50	32	22
Semi Circle	40	26	18

### HIGHLIGHT FEATURES

Wifi Access	✓	✓	✓
Disabled Access	✓	✓	

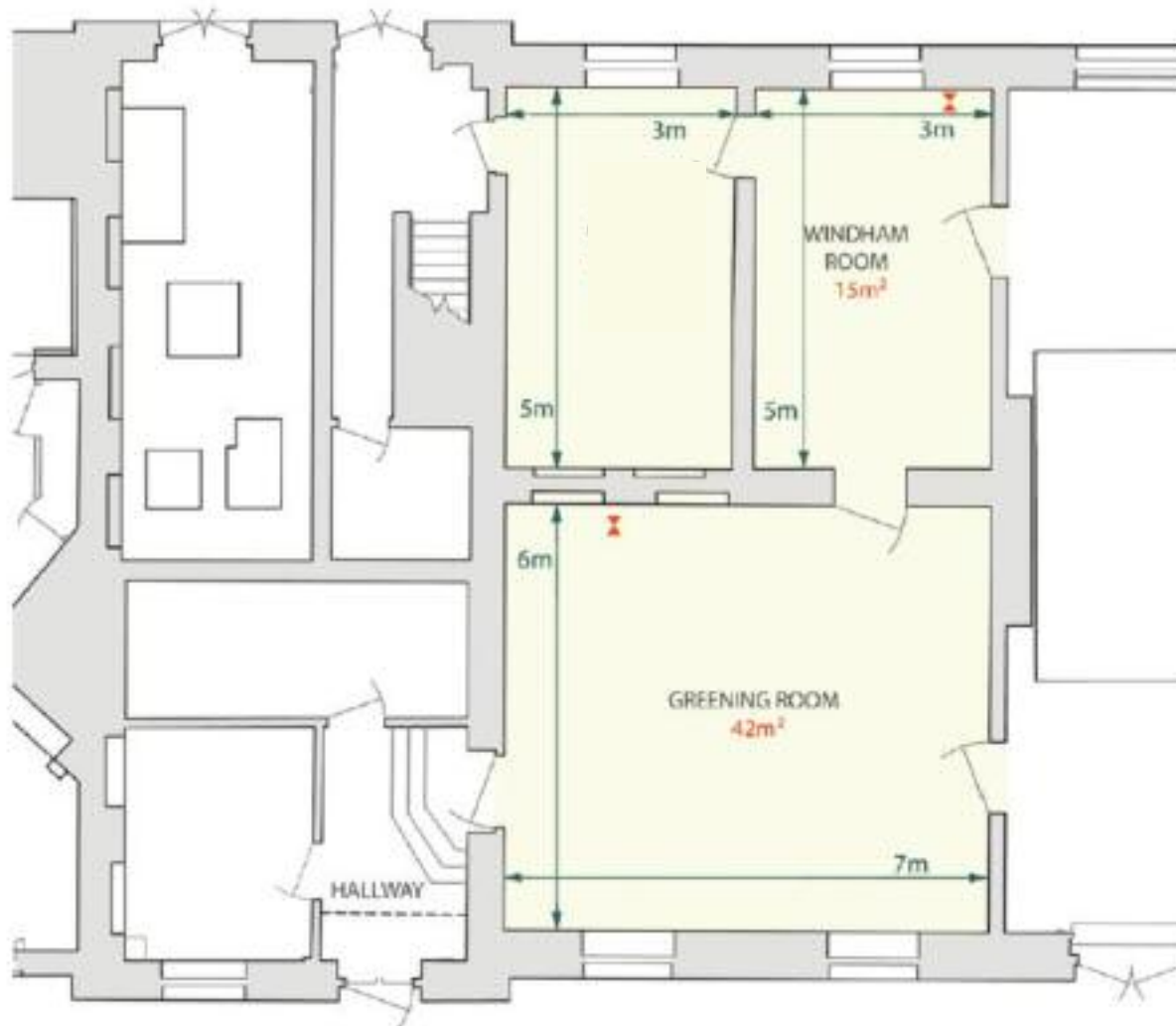
### KEY

- Floor Socket with data
- Projector
- Data Point



# The Mews Conference Centre

## Ground floor - Side room specification



### KEY PLAN



ROOM OPTIONS	Greening Room	Windham Room
Theatre	30	12
Cabaret	20	–
Boardroom	24	6
Classroom	18	6
U-Shape	18	–
Circle	22	12
Semi Circle	18	8

### HIGHLIGHT FEATURES

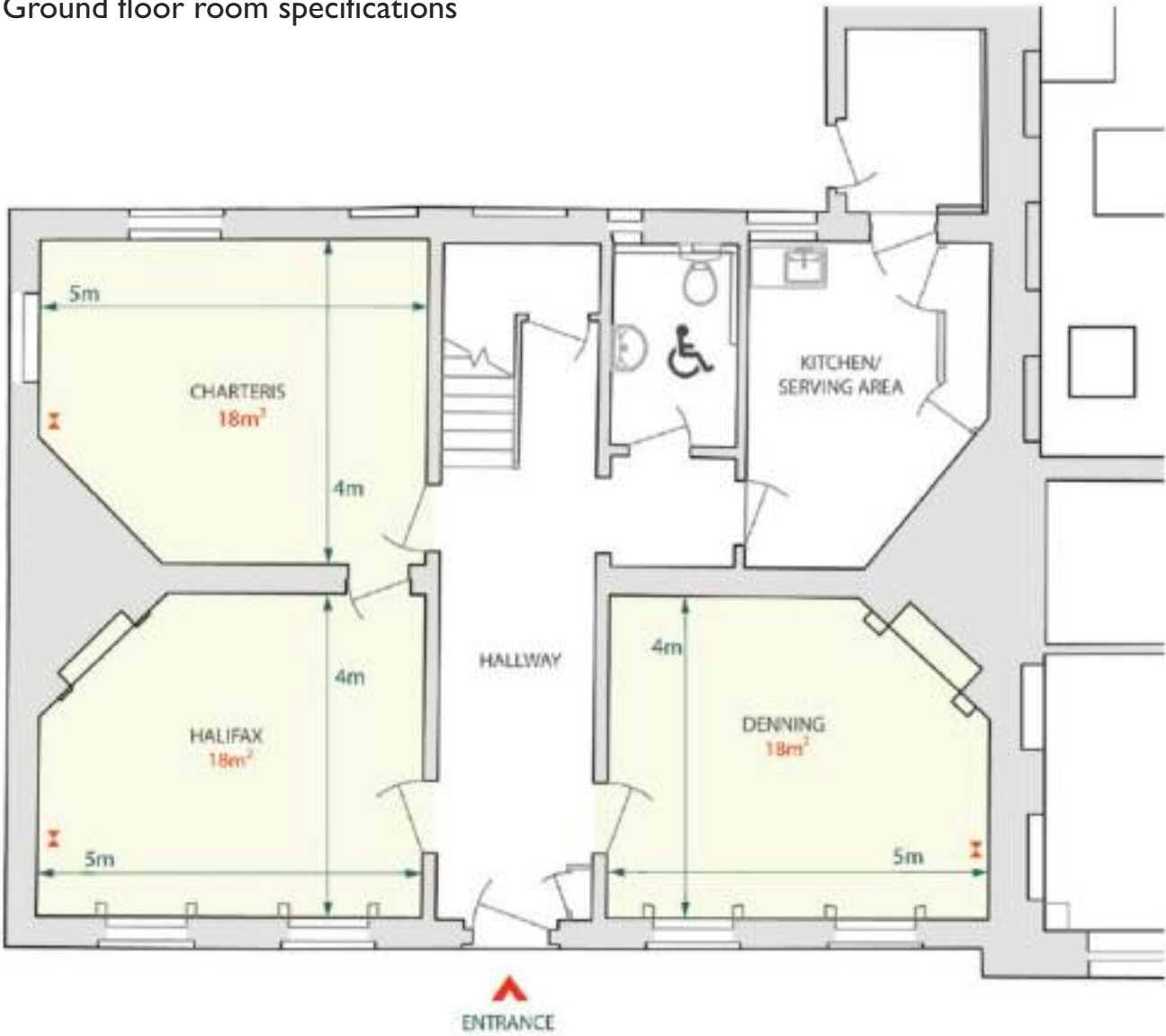
Wifi Access	✓	✓
Disabled Access	✓	✓

### KEY

- Floor Socket
- Projector
- Data Point

# Groom's House

## Ground floor room specifications



### KEY PLAN



ROOM OPTIONS	Halifax	Denning	Charteris
Theatre	12	12	12
Cabaret	-	-	-
Boardroom	12	12	12
Classroom	-	-	-
U-Shape	-	-	-
Circle	12	12	12
Semi Circle	8	8	8

### HIGHLIGHT FEATURES

Wifi Access	✓	✓	✓
Disabled Access	✓	✓	✓

### KEY

- Floor Socket
- Projector
- Data Point



**Cumberland Lodge**  
**The Great Park**  
**Windsor SL4 2HP**  
**+44 (0)1784 432316**  
**[enquiries@cumberlandlodge.ac.uk](mailto:enquiries@cumberlandlodge.ac.uk)**

**[www.cumberlandlodge.ac.uk](http://www.cumberlandlodge.ac.uk)**  
**@cumberlandlodge @clvenue**