



Information for visiting groups



Welcome



Founded in 1947, Cumberland Lodge is a charity that empowers people, through dialogue and debate, to promote progress towards more peaceful, open and inclusive societies. We run an annual series of conferences, panel discussions, seminars and retreats that tackle the causes and effects of social division, and dedicated programmes to support university students and pupils at secondary schools and colleges.

We fund our charitable work by making our facilities available for guest conferences, meetings, away-days, professional development courses and special events.

We occupy a stunning 17th-century, Grade II listed former Royal residence, tucked away in the heart of Windsor Great Park. As a venue for conferences, meetings and special events, we are noted for our historic rooms, excellent food, modern facilities and exceptional quality of service. We are also renowned for providing a stimulating and inspiring atmosphere that guests return to, again and again, and we are fully [Covid-secure](#).

This pack provides information to help you prepare for your visit. We also invite you to visit our website and to visit the [About Us](#) and Impact sections to find out more about our work.

We look forward to welcoming you.

Best wishes,

A handwritten signature in black ink, reading 'Edmund Newell'. The signature is written in a cursive, flowing style.

Canon Dr Edmund Newell
Chief Executive

Cumberland Lodge
The Great Park
Windsor
SL4 2HP
01784 432316
cumberlandlodge.ac.uk
[@cumberlandlodge](https://www.instagram.com/cumberlandlodge)
enquiries@cumberlandlodge.ac.uk

Guest information

Arrivals and departure

There is ample free parking at Cumberland Lodge. If you are arriving by train, the nearest station is Egham, where taxis are available. Please see How to Find Us on page 7 below, for further details.

On arrival, you will be welcomed at Reception by a member of our Meetings & Events team or one of our Night Porters, and given an electronic pass for your bedroom and our main entrances. This pass must be returned to Reception before you leave.

Please vacate your bedroom by 9am on the day of departure, to enable our housekeepers to prepare it for our next arrivals, unless a later time has been agreed for your group. The Receptionist or a member of our Meetings & Events team will advise you about where luggage can be stored.

Accessibility

There are two en-suite bedrooms in the main building that are suitable for guests with additional mobility needs, and accessible to wheelchairs.

A lift large enough for wheelchairs provides access to all floors in the main building. There are also wheelchair accessible, ground floor public toilets in the main building and Groom's House.

Our main conference room in the Mews is wheelchair accessible and fitted with an induction loop for the hard of hearing. We also have a portable hearing loop for use in other rooms. Please notify Reception on arrival if you require any assistance. Our full Accessibility Statement is available on the [Frequently Asked Questions](#) page in the Venue Hire section of our website.

Bedrooms

We have 58 en-suite bedrooms, each with its own individual character, spread across three buildings: the [Lodge](#), the [Mews](#) and [Groom's House](#). Most of them can be arranged with twin beds. Towels and toiletries are provided.

Cash machines

The nearest ATMs are in Egham and Old Windsor.

Chapel

When not pre-booked by other visiting groups, our small [Chapel](#) is available for use for private prayer, reading or reflection, on the first floor of the main building. It can be accessed via the Tapestry Hall staircase.

COVID-19 response

We are a Covid-secure site, with rigorous policies and enhanced procedures in place so that people can visit us and work in confidence. We are proud to have 'We're Good to Go' accreditation from VisitBritain and we are continuously reviewing our approach in line with the latest Government guidance.

You can find out more, and see our latest updates, on the [Covid-secure Events](#) page of our website.

Meals and bar

Meal times, including morning coffee and afternoon tea, are arranged around the requirements of each group. Your group leader will give you full details. However, standard times for main meals are:

Breakfast	8.00am	Monday to Saturday
	9.00am	Sunday
Lunch	1.00pm	
Dinner	7.15pm	

Please notify us in advance of any special dietary requirements, including Halal meals. Kosher meals can be arranged for an additional cost, provided that we receive sufficient notice.

The Bar is generally open before dinner and after the evening conference sessions, but please check with your group leader as to opening times during your visit.

Merchandise

A small range of merchandise can be purchased from Reception. This includes Cumberland Lodge tote bags, mugs, guidebooks, books, greeting cards and prints, and Windsor Great Park honey.

Reception

Cumberland Lodge is staffed 24 hours a day. During the daytime, a member of our Meetings & Events team is always available and Night Porters are on duty overnight. If they are not available at Reception, please press the button on the desk and they will respond as soon as possible.

Recreational facilities

We have a wide range of [recreational facilities](#) – as well as 5,000 acres of beautiful parkland on our doorstep!

We have a tennis court, and rackets and balls can be borrowed from Reception, free of charge. Croquet, boules and rounders can be played in the garden, weather permitting. In the Basement, there are pool and table-tennis tables and a recreational space, suitable for parties or relaxation.

Board games are available in the Bar, and there are televisions in the Sitting Room and Basement. You are welcome to play the pianos in the Drawing Room and Tapestry Hall, provided that you do not disturb fellow guests, and we encourage you to use our Chapel and Library when they are not otherwise in use.

We encourage visiting groups to allow time for a walk in the Great Park, and a map with suggested walks is available from Reception. Local attractions include Windsor Castle, St George's Chapel, The Savill Garden, Valley Gardens, Virginia Water, Eton College, and the Magna Carta, J F Kennedy and Royal Air Force memorials at Runnymede.

Safeguarding

Cumberland Lodge is committed to providing a safe environment for all who work or stay with us, with special provisions for children (those aged under 18) and vulnerable adults. Our Safeguarding Policy is reviewed annually and a copy if available on our website. You can download our Safeguarding Policy Statement, which summarises our approach and provides useful contact details, from the [Frequently Asked Questions](#) page in the Venue Hire section of our website.

For enquiries about our approach to safeguarding and relevant codes of conduct, or for any concerns relating to safeguarding during your stay, please contact Merrill Ryan (Hospitality Director and our Safeguarding Co-ordinator) at mryan@cumberlandlodge.ac.uk or on 01784 497783. Our Trustee with responsibility for safeguarding matters is Ingrid Tennessee.

Security

Cumberland Lodge is located in a safe, secluded environment. The site is covered by CCTV for security reasons. Our external doors are locked, with access via electronic keycards only. Our bedrooms are lockable and equipped with safes for small personal items.

WiFi

WiFi is free and available throughout the site (no password required). Laptops, screens and projectors are available in most conference rooms as standard. You are advised to bring your own laptops/tablets.



About us

Cumberland Lodge is a charity that empowers people, through dialogue and debate, to tackle the causes and effects of social division. Our work is supported by the individuals and organisations who book our grounds and facilities for conferences, meetings and special events.

For more than 70 years we have been working with people of all backgrounds, ages and perspectives, to challenge silo thinking and incubate fresh ideas that promote progress towards more peaceful, open and inclusive societies.

We were founded in 1947 with the support of King George VI and Queen Elizabeth The Queen Mother. Our founder, Amy Buller, envisioned a place where people would 'examine the fundamental assumptions' behind complex challenges facing society, and that remains at the heart of what we do. We inspire people to exchange views and think creatively about how to tackle pressing social and ethical issues, in order to influence policy and improve public awareness and understanding, and we actively involve young people and students in everything we do, to help nurture future leaders and change-makers.

What we do

Our high-profile, annual series of roundtable conferences, panel discussions, seminars and retreats addresses some of today's most pressing issues that threaten to divide society. Conference attendance is supported by our charitable funds, to ensure a diverse representation in all our discussions, and bursaries are available to support travel costs for students with limited financial means who would otherwise not be able to attend.

Insights and recommendations from our conferences are critiqued through expert consultations and shared with policymakers, influencers and the wider public through solutions-focused reports. Find out more at: cumberlandlodge.ac.uk/about-us

Supporting students and young people

We actively involve young people and students in all aspects of our work, and we provide transformative experiences for students from all over the world. Almost 4,000 students visit us every year.

We offer our facilities to higher education institutions for subsidised study retreats, with the option of incorporating a St Catharine's Session, a guided group discussion that encourages students to reflect on social and ethical concerns outside of their usual field of study. Bursaries are available to support students with limited financial means to attend these retreats with their peers.

We also run scholarship and fellowship schemes that support PhD students from universities across the UK with networking, mentoring and personal development opportunities. We help them to hone their public engagement, communications and event facilitation skills, and engage them in debates and discussions on pressing social issues outside of their fields of study.

Our Emerging International Leaders programme on Freedom of Religion or Belief equips international students from universities across the UK with the skills and insight necessary to drive debate, influence policy and build a powerful global network in support of human rights.

Find out more on the [What We Do](#) section of our website.

Social media

Please follow us and comment on your experience at Cumberland Lodge on social media:



@CumberlandLodge

Friends

Established in 2014, the [Friends of Cumberland Lodge](#) is a group of people who want to enjoy a closer connection to our work. Membership offers an excellent way of keeping informed about what's happening at Cumberland Lodge, as well as receiving invitations to our public events. There are four types of annual membership:

Individual	minimum annual subscription £35
Joint (two people living at the same address)	£50
Institutional	£50
Student	£10

This scheme helps to support our charitable work, including student fellowships and bursaries, and other special projects. Please email friends@cumberlandlodge.ac.uk to find out more,

Support our work

To find out more about how you could help to support us in building a better society for everyone, please visit cumberlandlodge.ac.uk/about-us/support-our-work

How to find us

For full travel directions to Cumberland Lodge, please visit the [Find Us](#) section of our website.

By car

Please use postcodes SL4 2JA (if travelling from Windsor) or TW20 0XU (if travelling from Staines) on sat-nav to reach one of two gates into The Great Park, before following signs to Cumberland Lodge.

By rail

The closest stations, all a 10-15 minute drive away, are Egham (Reading - Waterloo Line), Windsor & Eton Riverside (Windsor - Waterloo Line) and Windsor & Eton Central (Windsor - Slough - Paddington Line).

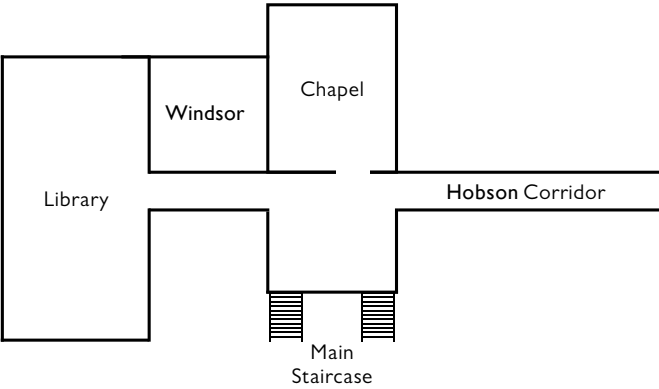
By taxi

We recommend booking taxis in advance. Please call Windsor Cars on 01753 677 677.

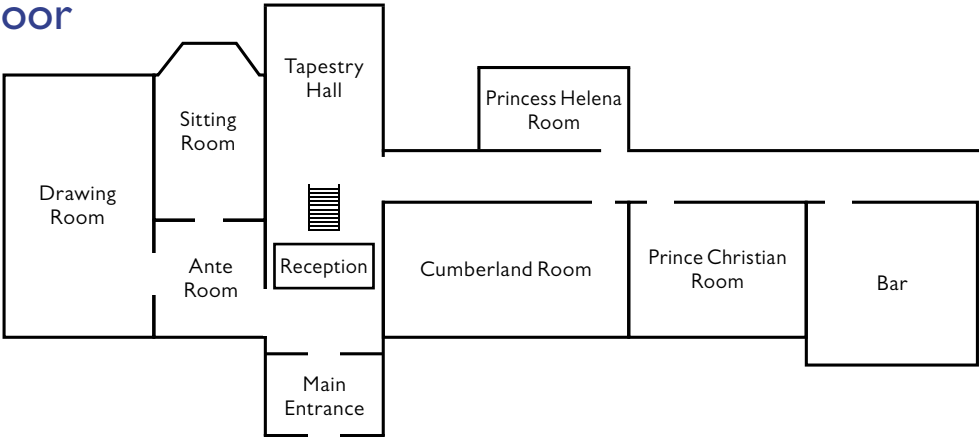
Floor plans



Main Lodge First floor



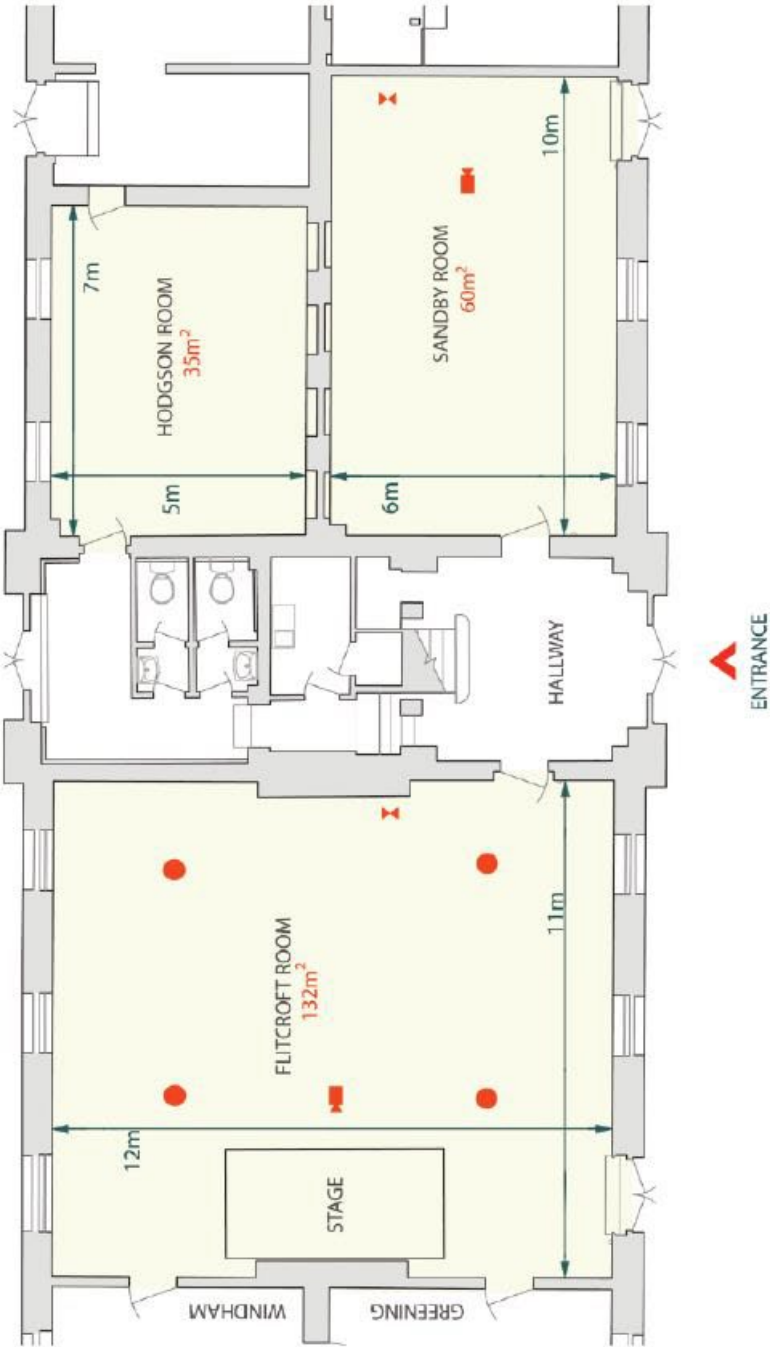
Ground floor



The Mews Conference Centre

Ground floor, central rooms

KEY PLAN



ROOM OPTIONS	Flitcroft Room	Sandby Room	Hodgson Room
Theatre	120	50	30
Cabaret	66	30	20
Boardroom	48	30	22
Classroom	60	24	18
U-Shape	36	24	16
Circle	50	32	22
Semi Circle	40	26	18

HIGHLIGHT FEATURES

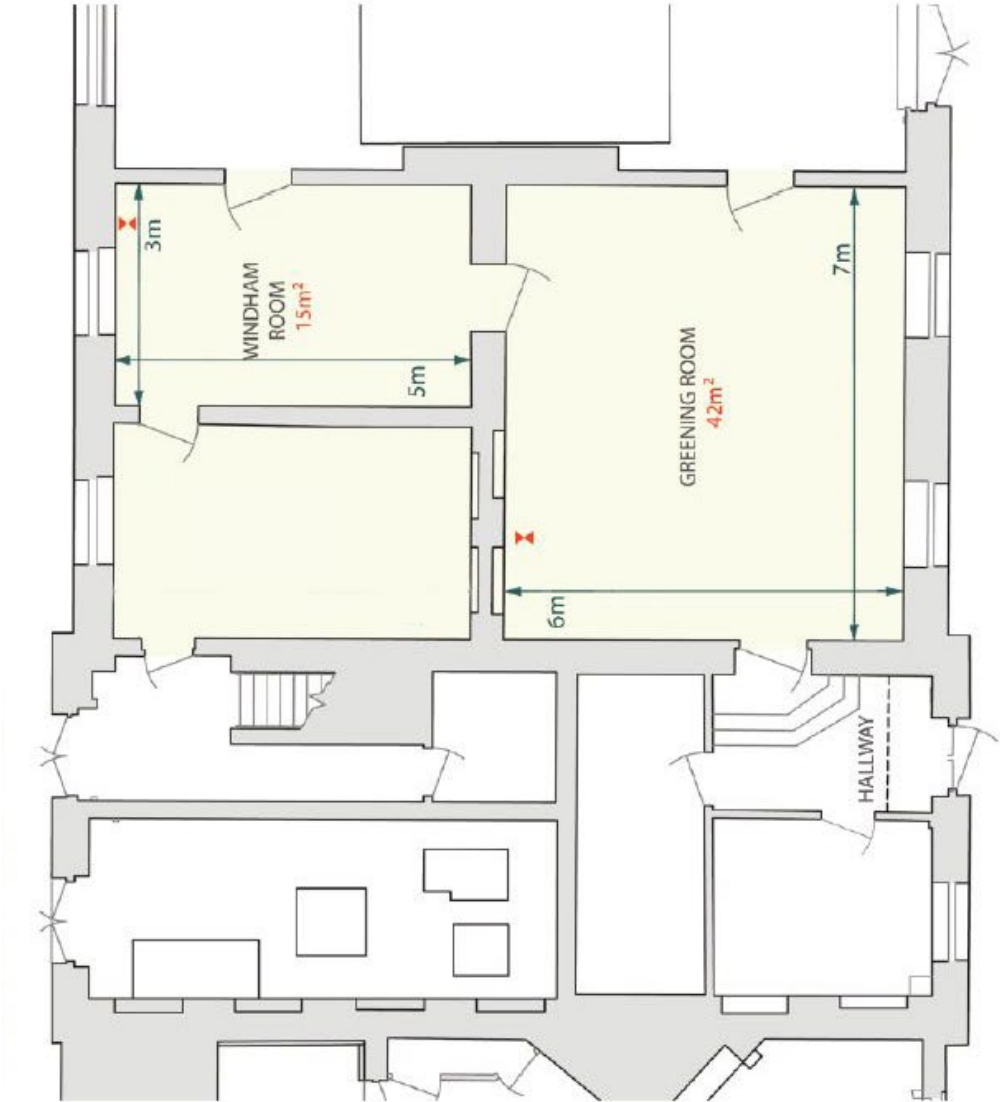
Wifi Access	✓	✓	✓
Disabled Access	✓	✓	✓

KEY

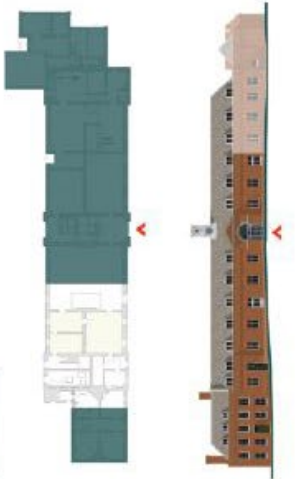
- Floor Socket with data
- Projector
- Data Point

The Mews Conference Centre

Ground floor, side rooms



KEY PLAN



ROOM OPTIONS		Greening Room	Windham Room
	Theatre	30	12
	Cabaret	20	--
	Boardroom	24	6
	Classroom	18	6
	U-Shape	18	--
	Circle	22	12
	Semi Circle	18	8

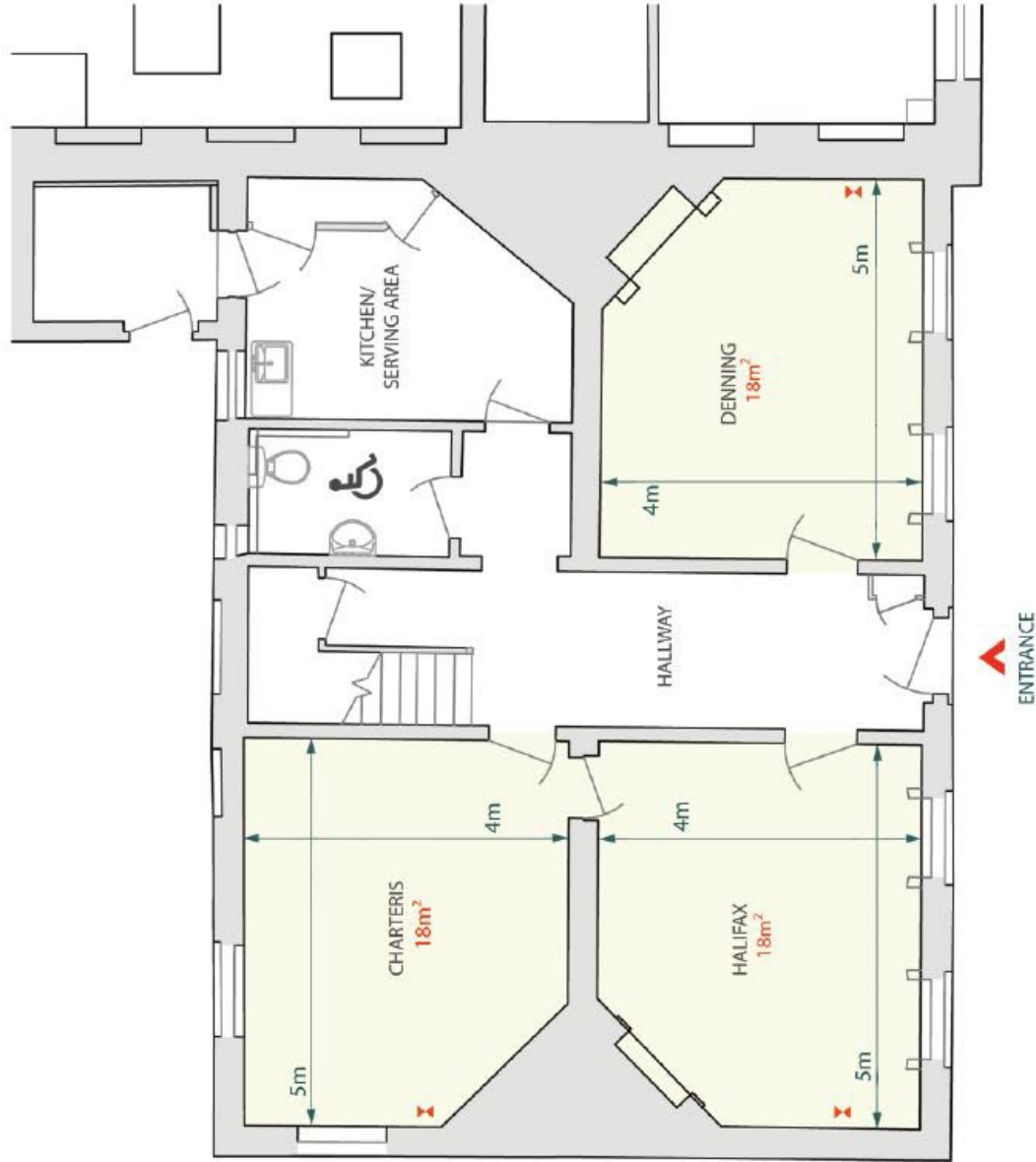
HIGHLIGHT FEATURES

	Wifi Access	✓	✓
	Disabled Access	✓	✓

KEY

- Floor Socket
- Projector
- Data Point

Groom's House



KEY PLAN



ROOM OPTIONS	Halifax	Denning	Charteris
Theatre	12	12	12
Cabaret	--	--	--
Boardroom	12	12	12
Classroom	--	--	--
U-Shape	--	--	--
Circle	12	12	12
Semi Circle	8	8	8

HIGHLIGHT FEATURES

Wifi Access	✓	✓	✓
Disabled Access	✓	✓	✓

KEY

- Floor Socket
- Projector
- Data Point

Please note

We ask everyone who visits or stays overnight at Cumberland Lodge to abide by the following policies:

Phones

As a charity that exists to inspire dialogue and debate, we strongly encourage you to engage in conversation with your fellow guests and to avoid using mobiles in our dining rooms.

Alcohol

As a condition of our licence, it is strictly forbidden to bring alcoholic drinks into Cumberland Lodge. Students are warned that, if discovered, any alcohol brought into the Lodge will be confiscated until their departure. Offending students may be sent home and, if the incident is serious, the department may be asked not to return to the Lodge. Group leaders and visiting staff are asked to ensure this rule is taken seriously. Alcoholic drinks can be purchased from our Bar.

Smoking

Smoking is not permitted inside the buildings (including e-cigarettes). Ashtrays are located a short distance from the main entrances.

Parties

We do not allow parties in bedrooms or flats. A dedicated space for parties and recreation is available in the Basement (The Vaults).

Damage to property

The organisation you are visiting with will be charged for any incidents of damage to our property during your stay. This includes smoking indoors, soiling of bedrooms, physical damage and vandalism. Your group leader has been provided with full details of fines that may be incurred.



Access to private property

While we encourage guests to explore our gardens and to take walks in Windsor Great Park during free time, please do not attempt to access the woodland and fields to the west and south of Cumberland Lodge, beyond the boundary fences (shown in the map below). For reasons including wildlife activity and your own safety, trespassing in these areas is strictly forbidden. These are private rural lands which are managed by the Crown Estate's park-keeping team for nature, not for public use, and as such the terrain is not suitable for walking.

To respect the privacy of our neighbours in the Mews properties, please do not go beyond signs that say 'Private' or 'No Admittance'. We also ask that groups keep noise levels to a minimum in the evenings.

Please note that access to the roof of the Lodge is strictly prohibited.

If you would like recommendations for some of the best ways to enjoy our Great Park surroundings on foot, we have a guide with suggested walking and running routes, which is available from reception or online [here](#). If you are planning to go for a walk or run, please note the guidance below on access to the Great Park outside of daylight hours.

After dark

At the request of The Crown Estate, walking, running or cycling in Windsor Great Park is not permitted after dark. If you go outside between dusk and dawn, please stay within the grounds of Cumberland Lodge. There is no lighting in the wider Great Park, and we cannot be responsible for your safety once you are outside of our boundaries, which are illustrated on the map below.

We encourage group leaders to work with us on reminding students of the guidance provided to ensure a safe and enjoyable visit for all.



Cumberland Lodge
Windsor Great Park, Windsor, SL4 2HP
01784 432316
cumberlandlodge.ac.uk
enquiries@cumberlandlodge.ac.uk

Cumberland Lodge is a company limited by guarantee.
Company no. 5383055. Registered charity no. 1108677