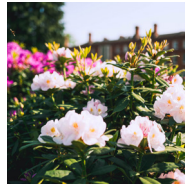
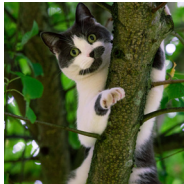
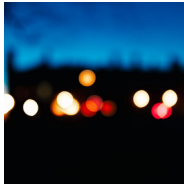




Cumberland  
Lodge

A unique venue in the  
heart of Windsor Great Park



# Welcome to Cumberland Lodge

A truly distinctive venue in the beautiful surroundings of Windsor Great Park. Home to an education charity and operated as a social enterprise, we're steeped in more than 350 years of history but with the future very much at the forefront of our approach.

If you're searching for a unique location for your next event, we can help.



## Our venue

You can hire our beautiful grounds and facilities for residential or non-residential conferences, meetings, away days, and special events such as weddings, throughout the year.

We work to provide a setting that's equally intellectually and professionally stimulating, as well as welcoming, thoughtful, and inspiring. Our spaces enable your guests to interact with one another in ways that aren't necessarily possible elsewhere.

Located less than 30 miles outside of London, we're both remote and accessible, offering tranquil surroundings that can be easily reached via good transport connections.

What's more, when you choose us as the venue for your event, you're supporting our work as an educational charity. Since 1947, we've been working to promote more just and inclusive societies, through our own programme of workshops and activities.





## Our location

Venues in Windsor are hugely in demand, and it's no wonder considering how beautiful and steeped in history the town is. Both Windsor Castle and the Magna Carta memorial at Runnymede are less than five miles away.

We're nestled in the heart of Windsor Great Park, an ancient royal landscape of forests, grasslands, lakes, and gardens. With nearly 5,000 acres of outdoor space, the Park offers beautiful views year-round for you to explore. During your stay, we can recommend some of our favourite walking and running routes, with guides available from our Reception.

Cumberland Lodge is well located for national and international meetings. We are just 20 minutes from London Heathrow, 15 minutes from regular train services to London Waterloo and Paddington (via Windsor and Egham railway stations), and 15 minutes from the M25, M4 and M3 motorways. For those travelling to us by car, there is plenty of free parking on site.





## Our facilities

Our meetings and events facilities can cater for up to 100 delegates, and currently include 58 bedrooms, three dining rooms, and a variety of meeting and social spaces (see p8-11).

Within Cumberland Lodge itself, you'll find the majority of our hospitality facilities and guest accommodation. The Mews contains two of our largest conference rooms, along with smaller breakout rooms and further bedrooms.

We also offer Groom's House, a 17th century house, nestled in an enclosed garden. Along with meeting spaces, it has a kitchen and bedrooms.

Our team will work closely with you to find a solution that meets your needs.



Scan the QR code to [see our full room specifications and take a virtual tour.](#)



## Meeting spaces

Our flexible meeting spaces suit a range of requirements, from smaller team meetings and away-days to larger residential conferences. On the left are three of the most used rooms.

Situated in The Mews, **Flitcroft** (*top left*) is our largest meeting room and main conference facility. It holds up to 100 people in theatre layout, and there are two adjoining breakout rooms, ideal for small group work. Flitcroft is well equipped with standard AV/IT facilities.

The **Amy Buller Library** (*bottom left*) is an ideal setting for boardroom-style meetings of up to 25 people. It is named after our organisation's founder Amy Buller, the author of *Darkness Over Germany*. Situated in the main Lodge, it offers beautiful views across our garden and out into Windsor Great Park.

Also situated in The Mews, **Sandby** (*inset left*) is a large meeting room that can accommodate up to 50 people in theatre layout.

All of our meeting spaces are flexible and can be arranged to suit your needs.



## Around the Lodge

There are plenty of public areas, both inside and outside of the Lodge, which can be used either as social spaces, or as quiet places to relax.

Our Drawing Room is an elegant space that can be used for receptions, recitals, talks and other such events. It features a grand piano, period furniture, and a collection of portraits of famous figures associated with our history.

If you've seen *The King's Speech* (2010), you might recognise our Tapestry Hall, which was used as one of the filming locations. In the winter, a log fire provides a warm and cosy atmosphere, and there are comfortable chairs which are perfect for reading in.

Our underground Vaults space is complete with projector, disco lighting, and sound system, perfect for evening entertainment.

Outside, as well as the picnic tables on our back lawn and individual benches dotted around the site, our Wilderness area provides a flexible and informal meeting space in between the trees.





## Staying with us

Our location in the heart of Windsor Great Park lets you get away from the noise of the city, perfect for a relaxing night's sleep.

We have double and twin bedrooms available, accomodating up to 95 guests overnight.

Each bedroom has a writing desk, in case you're feeling inspired by the sweeping parkland views. All feature en-suite bathrooms.

Although WiFi is freely available across our site, rooms are purposefully designed to be 'low-tech', offering you an opportunity to escape from screens and mobile devices and make the most of our tranquil setting.

The Cumberland Lodge site is accessible to wheelchair users and visitors with additional accessibility needs. Two bedrooms feature adapted bathrooms, and we can accomodate carers in adjacent rooms.

We also have family-friendly rooms that can accommodate babies and toddlers.



## Dining with us

Discussions over dinner have always been at the heart of the Cumberland Lodge experience. We pride ourselves on our locally-sourced produce and mouth-watering menus, which can be tailored to suit your requirements.

We offer three main dining spaces, each with a distinct atmosphere. The two largest rooms can open up to create a single dining space for up to 100 people, for larger private events.

Our Princess Helena dining room is ideal for private dinners, with an intimate atmosphere and views out over our gardens.

During the summer months, our main lawn is a popular choice for al-fresco lunches, with sheltered picnic tables looking out across the Great Park.

Alongside our dining room facilities we have a licensed bar, selling a range of alcoholic drinks, including our own special beer from the Windsor and Eton Brewery, as well as a number of alcohol-free options.



## Our history

Originally known as Byfield House, the site of Cumberland Lodge was first built upon in the republican era, after the English Civil War. Following the restoration of the monarchy, the Lodge became the residence of the Rangers of the Great Park, taking its name from the Duke of Cumberland, third son of King George II.

The Lodge fell vacant in 1947 and King George VI granted its use to our charity, founded by Amy Buller, author of *Darkness Over Germany*. The book offers insights into the rise of Nazism in the 1930s, highlighting the need to maintain respectful values and conversation in times of conflict and change.

Amy Buller was introduced to Queen Elizabeth, and invited to Buckingham Palace to discuss her work. Impressed, the King and Queen offered Buller the Lodge for an educational foundation. It has been our home ever since.

When you book your event with Cumberland Lodge, you will become part of this story, by helping to support our charitable mission.





## Our programme

Today, our educational programme continues to empower young people to lead the conversation around social division. Through our own workshops, conferences, training sessions, and digital content, we're providing them with the skills, perspective, and confidence to question, challenge, and understand some of the most complex social issues of our time.

Our activities are youth-centred, supporting the development of ethical leadership through intergenerational, intercultural, cross-sector dialogue. This work is possible thanks to the money our clients spend on booking with us.

Through our educational programme, we aim to build an intergenerational movement working towards a less polarised, more equal world, one conversation at a time.



Scan the QR code to [learn more about our programme](#).

# Say hello

Sarah, Alison, Beth, and Nicky in our Meetings & Events team look forward to discussing your requirements with you.



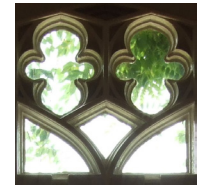
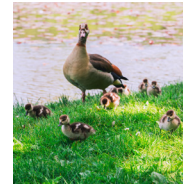
You can give them a call on 01784 432316, or email [enquiries@cumberlandlodge.ac.uk](mailto:enquiries@cumberlandlodge.ac.uk) for more information about what we can offer.

## Keep up to date with us

Scan the QR code to [find out more about how you can keep up to date with our work.](#)



@CumberlandLodge



Cumberland Lodge  
The Great Park  
Windsor  
Berkshire SL4 2HP  
[cumberlandlodge.ac.uk](http://cumberlandlodge.ac.uk)

